



Welcome to the Student Portal!

Overview:

1. Building student username, e-mail, and password.
2. Log in to the student portal account: <https://myportaldave.edukgroup.com/>
3. Accessing Office 365.

1. Building student username, e-mail, and password

Utilize:

- *Student Initials - first and last name*
- *Student Number - last 4 digits*
- *Student Social Security Number - last 4 digits*

Username formula:

initial_first_name + *last_name* + *last_4_digits_student_number*

Example:

- *Username:* **jdoue1010**
- *Name:* John Doe
- *Last 4 digits of your Student Number:* 1010

E-mail formula:

username@stu.daveschool.org

Example:

- *E-mail:* **jdoue1010@stu.daveschool.org**
- *Username:* jdoue1010

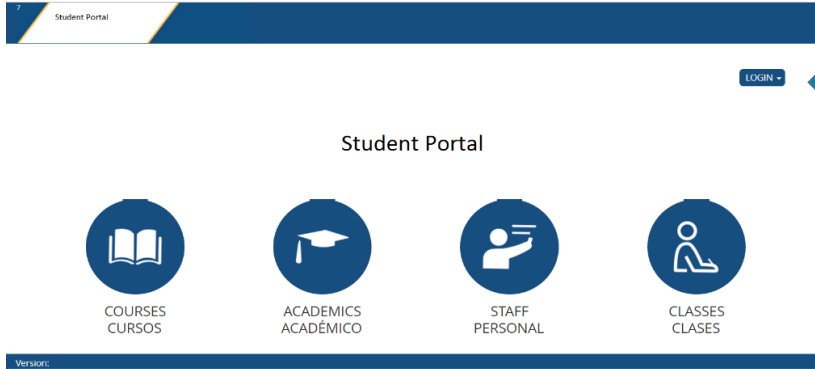
Password formula:

initial_first_name + *initial_last_name* + *last_4_digits_SSN*

Example:

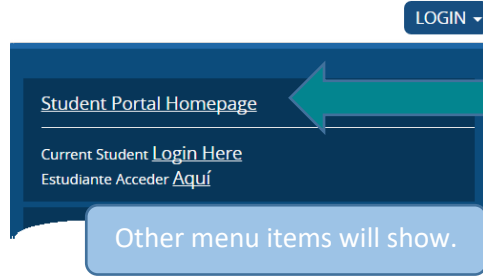
- *Password:* **jd2020**
- *Name:* John Doe
- *Last 4 digits of your social security number:* 2020

2. Login to the Student Portal Account – <https://myportaldave.edukgroup.com/>



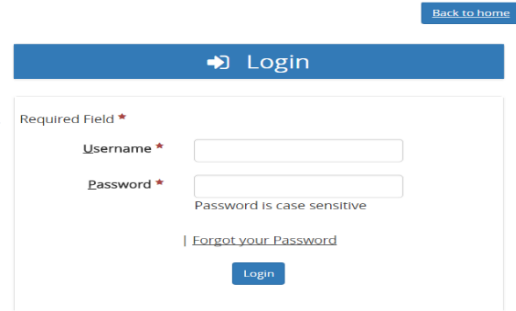
Press the 'LOGIN' button to continue.

Login Menus for Student Portal Links:

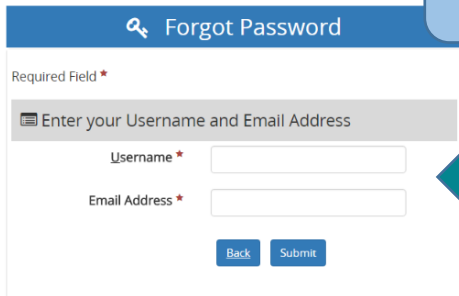


Press the 'Student Portal Homepage' button to continue.

Next, enter the 'Username' and 'Password', press 'Login' to continue. OR Press the 'I Forgot your Password' link.



After initial login a password reset can occur.



The 'Forgot Password' wizard will guide you.



If you are accessing for the **first time**, you will be prompted to answer two security questions, these will be later use in case of password reset or change in user profile.

Security Questions

Since you last logged in, new Security Questions have been created that will help with resetting forgotten accounts. Please answer the following questions as accurately as possible.

Required Field

Place of Birth?

What are the last four (4) numbers of your Social Security Number

Submit

3. Accessing Office 365

After completing the student portal account, go to Live.com to activate the new institutional email.

Remember, very important! Mail Office 365: (<http://mail.office365.com>) and use the e-mail and new password information.

***It is very important to activate your institutional email to access all related student communication sent by the institution and teachers, as well as access Canvas in the event you are taking online classes.**



Sign in

Next

No account? [Create one!](#)

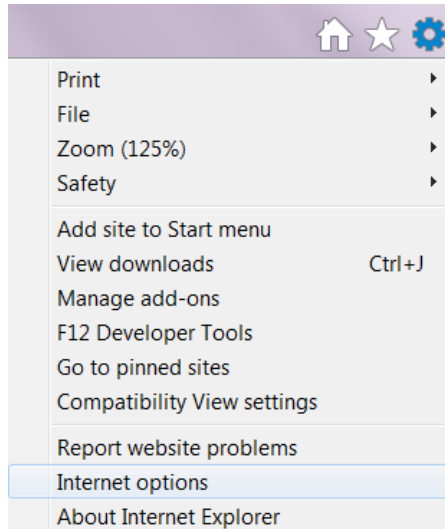


National
University College



Browser Configuration:

Cookies: Internet Explorer - Cookies must be enabled to 'Low' or 'Medium'



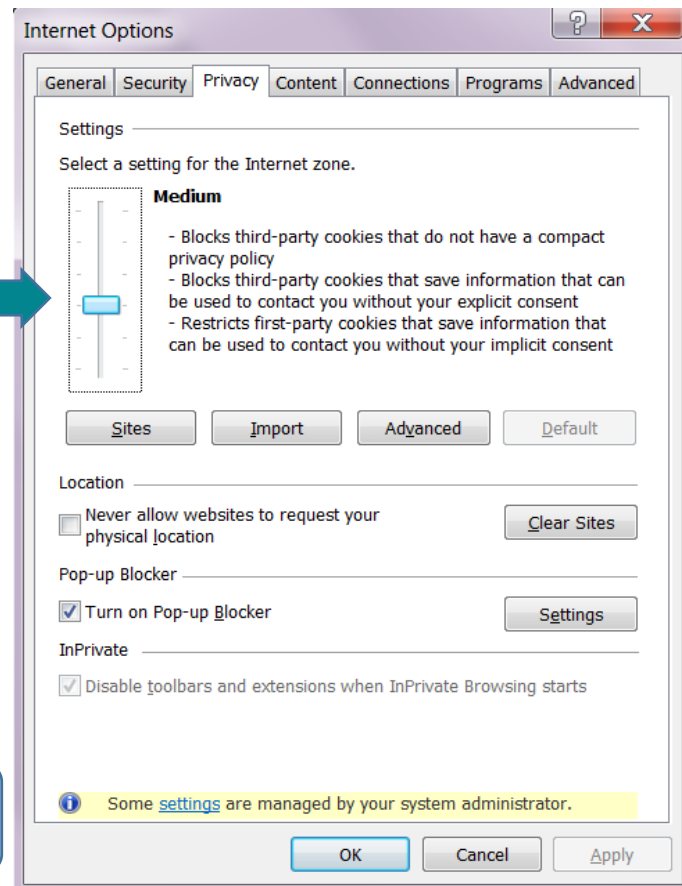
Settings use the 'Gear' icon located in the upper right corner of your browser.

Using Internet Explorer go to Settings, then Internet Options.

Locate the 'Privacy' tab to adjust slide level.

Adjust the level to 'Low' or 'Medium'.

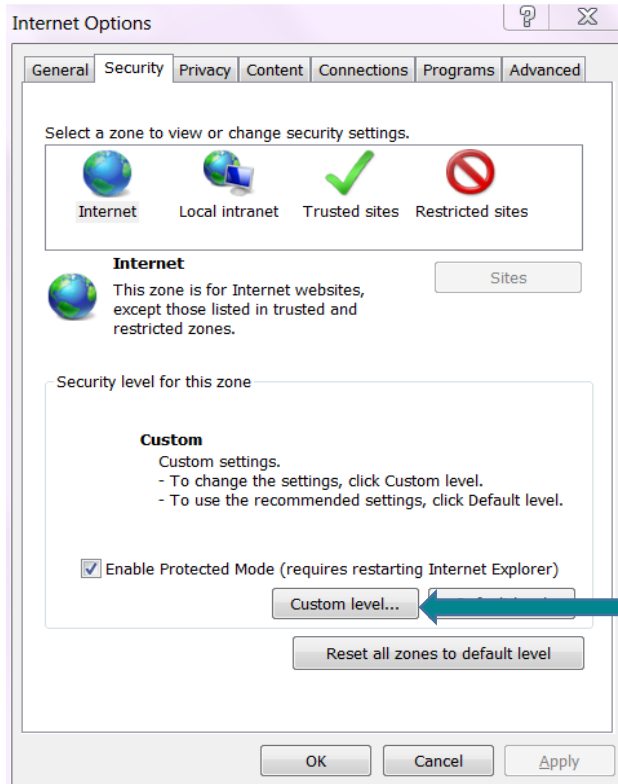
Press 'Apply' or 'OK' to save changes.



National
University College



JavaScript: Internet Explorer

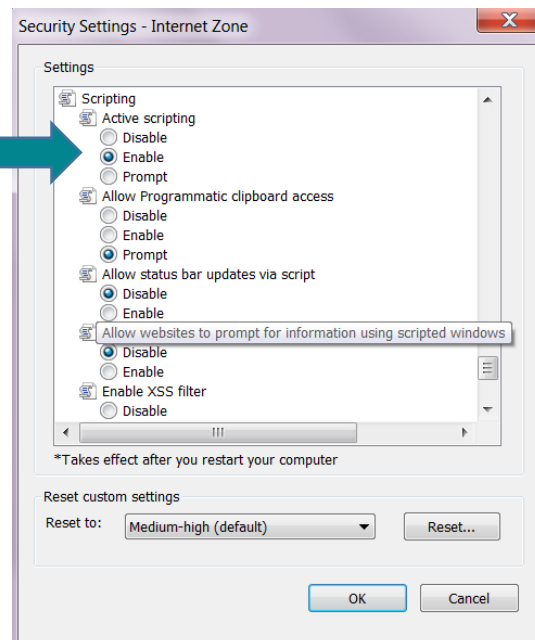


Staying in Internet Options.

Select the 'Security' tab.

Select 'Custom level...'

Verify or select 'Enable' from 'Active scripting'.



Press Ok to save. Then 'Ok' again to leave 'Internet Options'.